

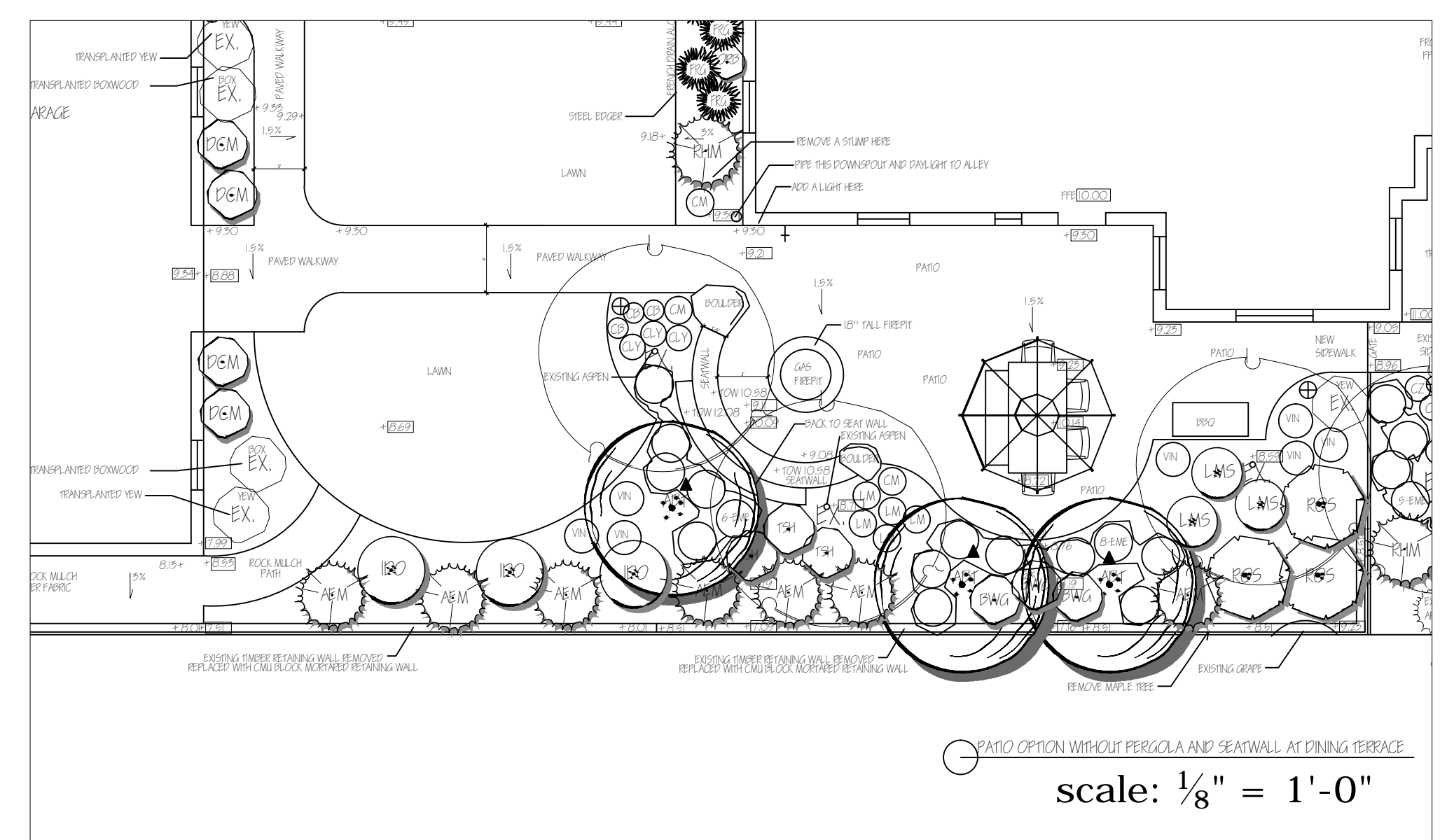
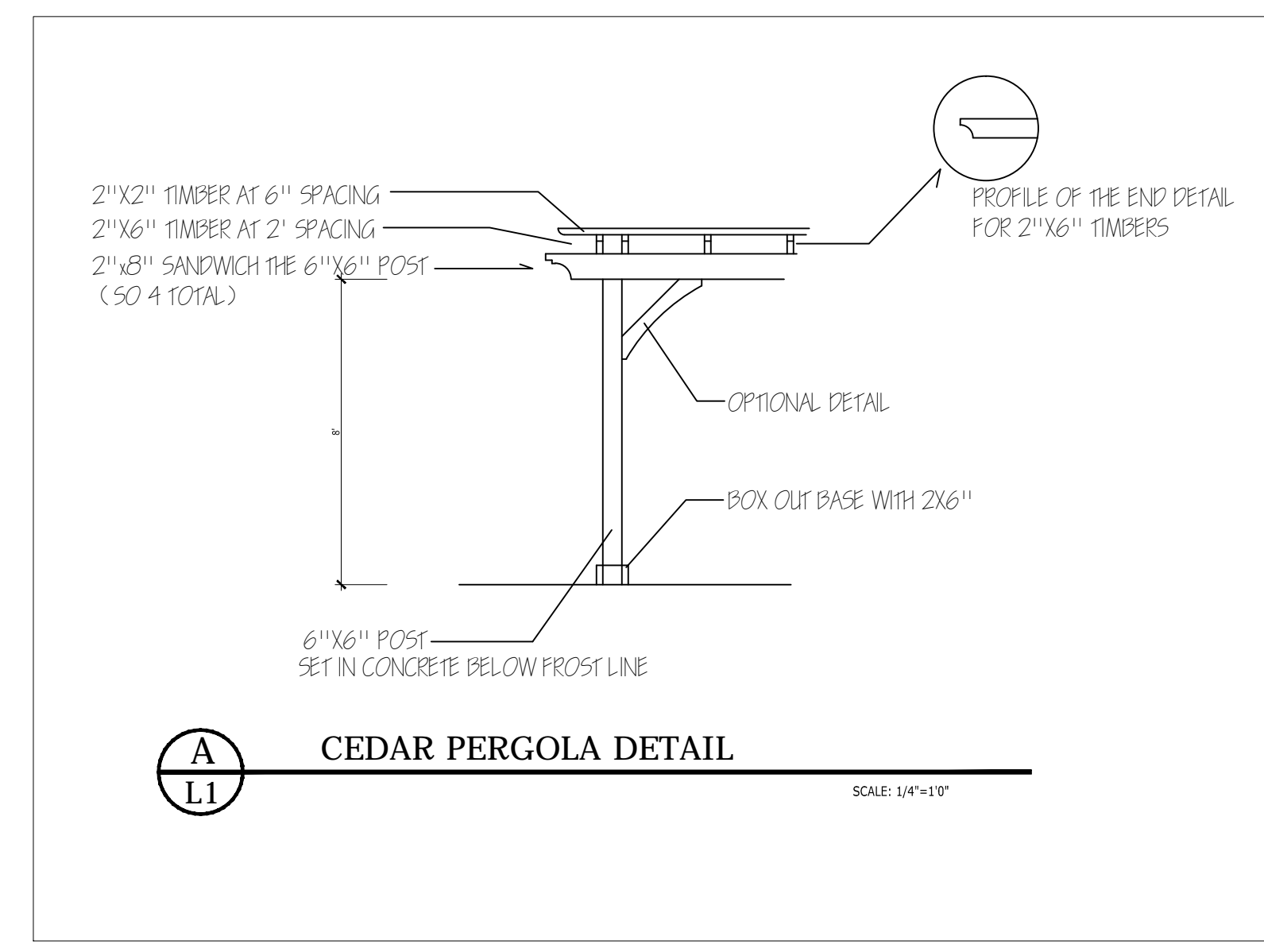
Rebecca R. Knapp
303.863.0524
1954 WEST 57th AVE.
DENVER, CO 80211
rebecca_knapp@hotmail.com
www.knapplandscapearchitecture.com

Plant List frontyard			
code	Plant Name	size	quantity
TREES			
SBB	Baby Blue Eyes Spruce	7'	1
SHRUBS			
BGM	Boxwood Green Mountain	7 gal	2
BGV	Boxwood Green Velvet	5 gal	8
DAS	Dwarf Alberta Spruce	7 gal	2
DCM	Carol Mackie Daphne	5 gal	3
EME	Emerald Gaiety Euonymus	1 gal	11
LMS	Limemound Spirea	5 gal	10
LPS	Little Princess Spirea	5 gal	7
OG	Blue Avena Grass	5 gal	22
RHM	RH Montgomery Spruce	6 gal	1
ROS	Rose of Sharon Helene	B&B	1
ZGR	Zebra Grass	5 gal	2
PERENNIALS			
CPC	Creeping Phlox magenta	1 gal	6
CZ	Coreopsis zagreb	1 gal	3
DA	Daylily Stella D'Oro	1 gal	6
DC	Geranium Dwarf Cranesbill	1 gal	9
LA	English Lavender	1 gal	6
SA	Salvia May Night	1 gal	6
SAC	Clematis Sweet Autumn	1 gal	1
VIN	Vinca minor	1 gal	11
*Transplant:			
	coreopsis zagreb		6
	boxwood		8
	Blue Avena Grass		6
	Lavender		5
	Emerald Gaiety Euonymus		2
	Dwarf Alberta Spruce		2

*before starting project see if these are still viable to transplant and adjust plant list accordingly - none of these are currently taken into account in the above amounts

Plant List backyard			
code	Plant Name	size	quantity
TREES			
ABT	Autumn Brilliance Serviceberry	8' clump	3
CSO	Crimson Spire Oak (columnar)	2"	3
NEM	Newport Purpleleaf Plum	2"	1
SPR	Spring Snow Crabapple (fruitless)	2"	1
SHRUBS			
AEM	Arbovitae Emerald	7 gal	7
BBN	Burning Bush Dwarf	5 gal	3
ORB	Barberry Orange Rocket	5 gal	3
BWG	Boxwood Winter Gem	5 gal	3
DCM	Carol Mackie Daphne	5 gal	4
EME	Emerald Gaiety Euonymus	1 gal	14
FRG	Feather Reed Grass	5 gal	7
IDO	Islanti Dogwood	5 gal	3
LPS	Little Princess Spirea	5 gal	3
LMS	Limemound Spirea	5 gal	3
MKL	Miss Kim Lilac	5 gal	1
RHM	RH Montgomery Spruce	6 gal	1
ROS	Rose of Sharon Helene	7 gal	3
SMS	Snowmound Spirea	5 gal	3
TSH	Hydrangea Twist and Shout	5 gal	3
ZGR	Zebra Grass	5 gal	1
PERENNIALS			
CB	Coralbells	1 gal	3
CLY	Columbine Yellow	1 gal	3
CM	Catmint	1 gal	3
LM	Lady's Mantle	1 gal	5
VIN	Vinca minor	1 gal	7
Transplant:			
	Yew		2
	boxwood		2

OPTION- LED LIGHT LEGEND		
SYMBOL	TYPE	QUANTITY
▲	UP LIGHT: 1575L AZT	8
⊕	PATH LIGHT: FUNDAMENTALS 15089 12T	9
∩	BROCK LIGHT: 15775 AZT	5
ALL LED FIXTURES ARE KICHER		



LANDSCAPE NOTES:

SOIL PREPARATION (PREMIUM COMPOST):
BED AREAS 5 YARDS PER 1000 S.F.
SHRUB AREA 5 YARDS PER 1000 S.F.
SOD AREAS 4 YARDS PER 1000 S.F.

MULCH (SMALL BARK MULCH):
BED AREAS 2" DEPTH (SMALL BARK)
NO FABRIC IN PERENNIAL BEDS
SOD (KENTUCKY BLUE GRASS BLEND)

IRRIGATION (AUTOMATED):
PERENNIAL AREAS AREAS DRIP LINE
DRIP TO ALL SHRUBS & TREES OUTSIDE OF PERENNIAL AREAS
LAWN AREAS TO BE WATERED WITH POP-UP SPRAY HEADS

EROSION CONTROL:
DOWNSPOUTS SHALL BE PIPED UNDERGROUND AND DAYLIGHT INTO SWALES TO MINIMIZE EROSION
STAKE ALL NEWLY PLANTED TREES

USE FILL DIRT TO RAISE GRADES WHERE NECESSARY AND COMPACT TO MINIMIZE SOIL SHRINKAGE

NEW PATIO/ WALK TO BE ETCHED COLORED CONCRETE (SAN DIEGO BLUFF) WITH SAW CUT JOINTS

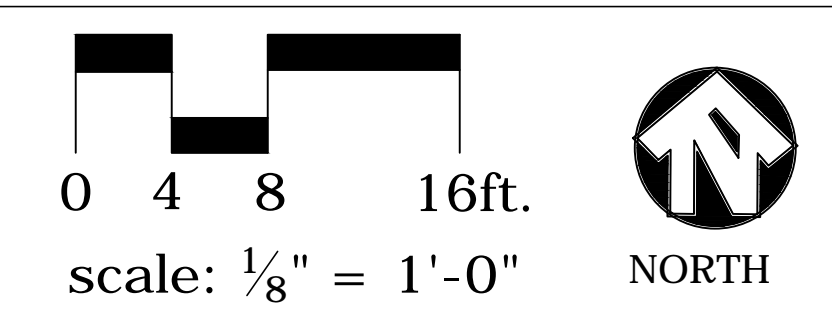
PERMITS ARE REQUIRED TO PLANT, PRUNE, OR REMOVE A TREE IN THE PUBLIC RIGHT-OF-WAY AND MAY BE OBTAINED FROM THE DENVER FORESTRY OFFICE AT 720-913-0651

CMU BLOCK MORTARED RETAINING WALL:
TO RETAIN GRADE BEFORE SOUTHERN FENCELINE

FLAGSTONE IN ARIZONA BLUFF

SANDSTONE BOULDERS:
1000 LBS. AVERAGE WEIGHT PER BOLLDER
DIG INTO GROUND FOR NATURAL APPEARANCE
BOULDERS TO BE SLIGHTLY FLAT ON TOP SO CAN BE USED AS A SEAT

GRADE AT REAR OF HOUSE TO SLOPE AWAY FROM HOUSE TO A FRENCH DRAIN ALONG THE STEELDECKER
FRENCH DRAIN TO BE PIPED TO DAYLIGHT OUT TO ALLEY SOUTH SIDE OF GARAGE



DATE:	BY:	COMMENTS:
	RRK	BACKYARD
	RRK	NORTH PLANTS
	RRK	PERGOLA DETAIL
	RRK	NEW GARAGE

DATE:	BY:	COMMENTS:
	RRK	APPROVED: PERK

DATE:	BY:	COMMENTS:
	RRK	APPROVED: PERK

DATE:	BY:	COMMENTS:
	RRK	APPROVED: PERK